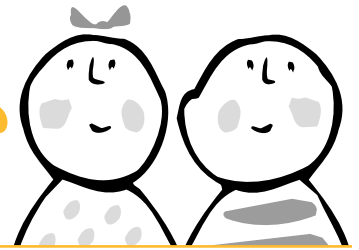




# SAFE KIDS CONNECTICUT Newsletter



DEDICATED TO REDUCING PREVENTABLE INJURIES AND DEATHS IN CONNECTICUT CHILDREN

*Dedicated to  
reducing  
preventable  
injuries and  
deaths in  
Connecticut  
children*

FALL 2006

Safe Kids Connecticut  
Coalition

Connecticut Children's  
Medical Center  
282 Washington Street  
Hartford, CT 06106  
TEL (860) 545-9988  
FAX (860) 545-9975  
www.ctsafekids.org

EDITOR  
**Karen Brock, MPH**  
Director  
Safe Kids Connecticut

CONTRIBUTOR  
**Garry Lapidus, PA-C, MPH**  
Director  
Injury Prevention Center,  
Connecticut Children's  
Medical Center








Honorary Chairman  
Senator Christopher J. Dodd



## School Bus Safety

School is here again, and with it more than 330,000 Connecticut kids will get there in a school bus. While school buses are a safe form of transportation—nationally, they constitute .3% of fatal crashes—they do have some risks. Nearly 75% of the school-age children who are killed each year in school transportation-related crashes are pedestrians. It is important to keep kids safe while getting on and off the bus.

### FOR KIDS:

-  Wait for the bus in a safe place, away from traffic and the street.
-  Line up facing the bus door, not along the side of the school bus.
-  Wait until the bus comes to a complete stop and the driver signals you, before you enter the school bus.
-  Never cross the street behind the school bus.
-  After getting off the school bus, move onto the sidewalk, out of traffic.
-  Wait for a signal from the bus driver before you cross the street. Walk at least 10 steps away from the front of the bus so that the bus driver can see you.
-  Drivers have to follow certain rules around school buses, but not all of them do, so watch carefully when getting on and off the bus.

(continued on page 2)

### MESSAGE FROM THE DIRECTOR

Happy autumn!  
Things have been  
very busy this  
summer for Safe Kids



Connecticut. With DPH, we ran 10 four-hour educational CPS trainings across the state for child care and healthcare providers, and will be running two more this fall. We hosted a statewide training on Britax child restraints for technicians. And, we have been very busy with our chapters, helping the Greater New Haven chapter host a safety fair at IKEA and working with enthusiastic organizations in Litchfield County to start a brand new chapter: Safe Kids Litchfield County. Congratulations to both of them!

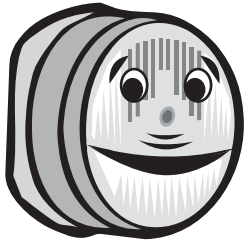
As always, we have a busy fall planned. We are gearing up for our annual Injury Prevention Conference on September 28th. In mid-September, we are running the two-day special needs car seat class for technicians. In October, we will be running a four-day CPS technician class in Torrington. We have several car seat clinics and car seat educational trainings planned for this fall. Finally, we are working on revamping our website for fresh look.

# Thank You to a Safety Star!

Thank you to the Connecticut Elks Association for their continued generous support of Safe Kids Connecticut. We appreciate their long-time dedication and exemplary support for keeping kids safe! •



## Be Alert!



Check the batteries on your smoke and carbon monoxide (CO) detectors when you change the time on October 29th. •

## Be a Safe Pumpkin (or Ghost or...)

Make sure kids are safe while trick or treating! Below is a checklist for kids and adults:

- My costume is light colored
- My candy bag is retroreflective
- My costume is easy to see out of
- My shoes fit and are easy to walk in
- My props are flexible enough not to cause injury if fallen on
- I walk from house to house, not run
- I walk on the sidewalk, not the street
- I don't run out from between parked cars



## Cooking Safety

Each year, 250 people are killed, nearly 4,000 people are injured and over 100,000 homes are damaged by fires involving cooking equipment. The leading factors for these fires are leaving equipment unattended, having combustibles too close to the heat source and unintentionally turning on or not turning off the device. Additionally, the devices most likely to be involved in these events are ranges, ovens and portable cooking or warming devices. Caregivers should make sure that kids are safe in the kitchen by:



Making sure kids are **ALWAYS** supervised in the kitchen



Unplug appliance cords when not in use and keep them tied up, out of kids' reach



Before cooking with a child, make sure you've taken safety steps, such as having a fire extinguisher nearby and posting emergency numbers near the phone •



## Welcome to our Newest Chapter

We would like to welcome our newest chapter: Safe Kids Litchfield County. They will cover the area of Litchfield County and be led by Education Connection. The chapter is off to an enthusiastic start and will have their first event, Walk to School Day on October 4th. Congratulations! •

## School Bus Safety

*(continued from page 1)*

### FOR ADULTS:



Drive carefully on neighborhood streets and around school zones. Always expect the unexpected.



When the lights are flashing on a school bus, come to a complete stop.



Red flashing lights indicate that the bus is stopped and students are getting on or off.

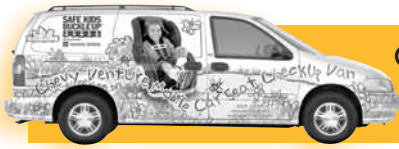


Don't start driving until the red lights stop flashing. Be aware that a child may dash across the street.



The fine in Connecticut for passing a stopped school bus is \$450.

Sources: NHTSA, CT DOT, American Red Cross, National Safety Council



## CHAPTERS AND COALITIONS UPDATE: Safe Kids Connecticut

### Safe Kids Valley Parish Nurse Community (SKVPNC)

The Valley has been busy keeping cool and safe with spring and summer time activities. Nine additional pool and water safety programs were held at area community centers and clubs this summer. Three bike safety and helmet fittings were also conducted. We will be having a quarterly Chapter meeting on September 12th and December 12th. New members are always welcome. We want to welcome everyone to the annual (free!) Children's Health and Safety Fair at the Boys and Girls Club in Shelton on September 16th from 10-1. Numerous activities include a car seat clinic, bike helmet fittings, health screenings, and much more. For more information, please call Cathi Kellett at (203) 732-1337.

### Safe Kids Windham County (SKWC)

*Saludos desde SKWC.* SKWC members, techs and instructors participated in the Annual Willimantic Boom Box Parade with members of Safe Kids New London County joining us in



the fun. It was a huge success with water and pool safety materials given out to the 6000+ attendees. We continued promoting CPS this summer with clinics hosted at the North Windham Fire Department, Columbia Fire House, Champagne Chevrolet

of Willimantic, and at the ACCESS Agency in Willimantic. SKWC assisted in distributing and properly fitting more than 60+ helmets at the Annual Mansfield Community Center Health & Safety Fair. We are excited to have community agencies such as the Willimantic DCF office, Mansfield Community Center, ACCESS and Generations of Willimantic ask us to assist at their events and we encourage more community agencies to use us as a resource this upcoming fall and winter season. For more information, call Marisol Feliciano at (860) 456-6978.

### Safe Kids New London County (SKNLC)

During the month of June, SKNLC was busy piloting their Dog Bite Prevention Program to area schools and daycare programs. A special thanks to all the Animal Control Officers who helped make the program successful. SKNLC continues to assist families on a twice-weekly basis at our permanent Child Safety Seat Inspection Stations. Currently, appointments are available on Tuesday and Thursdays from 4 PM-7 PM; Wednesdays, 12 PM-3 PM; and the first Friday of every month, 10 AM-1 PM. SKNLC has enjoyed fun outreach activities this summer including Wild Wednesdays at Mohegan Sun, Youthtopia in Jewett City, a bike rodeo at the Magnet School in New London, a community baby shower, and a healthy back to school event in Norwich. For more information call Esther Schuman at (860) 442-0733.

### Safe Kids Fairfield County (SKFC)

Greetings from SKFC where we are gearing up for a very busy fall. We have car seat clinics scheduled on September 9, 16, 23 and 30th as well as October

## MARK YOUR CALENDAR!

For more information  
[www.ctsafekids.org](http://www.ctsafekids.org)

**September 28, 2006**  
**7th Annual Safe Kids Connecticut Injury Prevention Conference**  
Crowne Plaza, Cromwell, CT

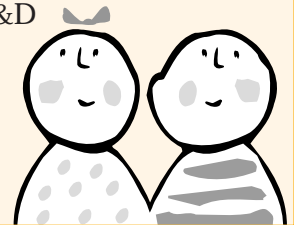
**October 4, 2006**  
**International Walk to School Day**

**October 8-14, 2006**  
**National Fire Prevention Week**  
"Prevent Cooking Fires:  
Watch What You Heat"

**October 15- 21, 2006**  
**National School Bus Safety Week**  
"Be Aware, Cross with Care"

**October 29, 2006**  
Change the time, change  
your batteries

**November 2, 2006**  
**Coalition Meeting**  
Noon to 2pm, CCMC,  
Level G, Conference  
Rooms C&D



1 and 4th at various locations throughout the county. Please check our web sites [www.fcsafekids.org](http://www.fcsafekids.org) for times and locations. If you are getting ready to recertify, there will be instructors on hand for sign-offs at all clinics. We also have several bicycle safety events scheduled if you would like to assist. Members of SKFC will be participating in Safe Kids Connecticut Annual Injury Prevention Conference September 28th. We hope to see you there. For more information, please Bob Cordes at 203-853-7115 or visit [www.fcsafekids.org](http://www.fcsafekids.org).

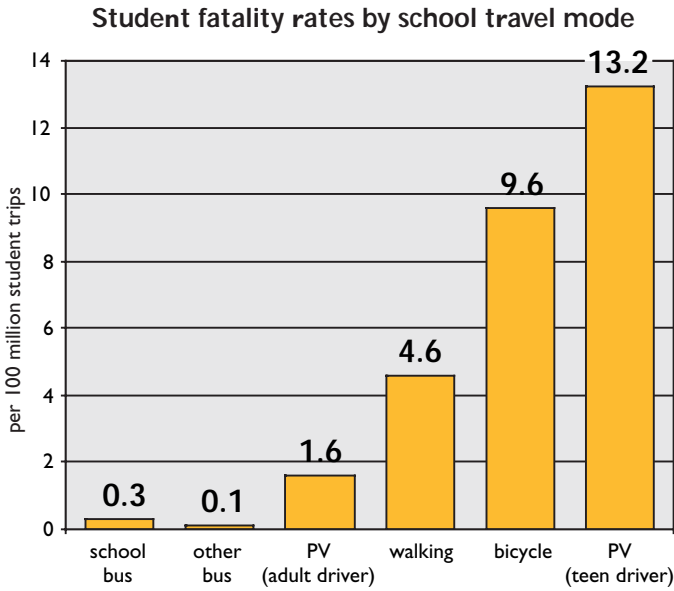
### Safe Kids Greater Waterbury (SKGW)

For more information, please call Sheila Staib at (203) 709-3655.



## Relative risks of school travel

Garry Lapidus, PA-C, MPH, Director, Injury Prevention Center, Connecticut Children's Medical Center; Associate Professor of Pediatrics and Public Health, University of Connecticut School of Medicine



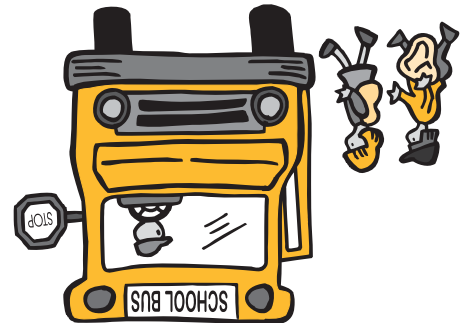
Source: Transportation Research Board, Special Report # 269, 2002.

Each year approximately 800 school aged children are killed in motor vehicle crashes during normal school travel hours (about 14% of the 5,600 child deaths that occur annually on U.S. roads). Almost all of these (98%) occur in passenger vehicles, or to pedestrians, bicyclists, or motorcyclists. A disproportionate share of these passenger vehicle related deaths (approx 450 of 8000, or 55%) occur when a teenager is driving.

When school travel modes are compared the fatality rates for passenger vehicles (PV) driven by teenagers is roughly 8 times higher than the rate for those driven by adults. School buses and other buses have the lowest fatality rates.

We can reduce the risks associated with school travel by promoting improvements in school bus pick-up and drop-off locations, improvements in passenger vehicle pick-up and drop-off locations, promotion of bicycle helmet use, and enforcement of teenage graduated driver licensing laws. •

## School Bus Safety



NOV 30  
FALL 2006

RETURN SERVICE REQUESTED

Safe Kids Connecticut Coalition  
 Connecticut Children's Medical Center  
 282 Washington Street  
 Hartford, Connecticut 06106  
 www.ctsafekids.org



Non Profit Org.  
 U.S. Postage  
**PAID**  
 Hartford, CT  
 Permit No. 3745